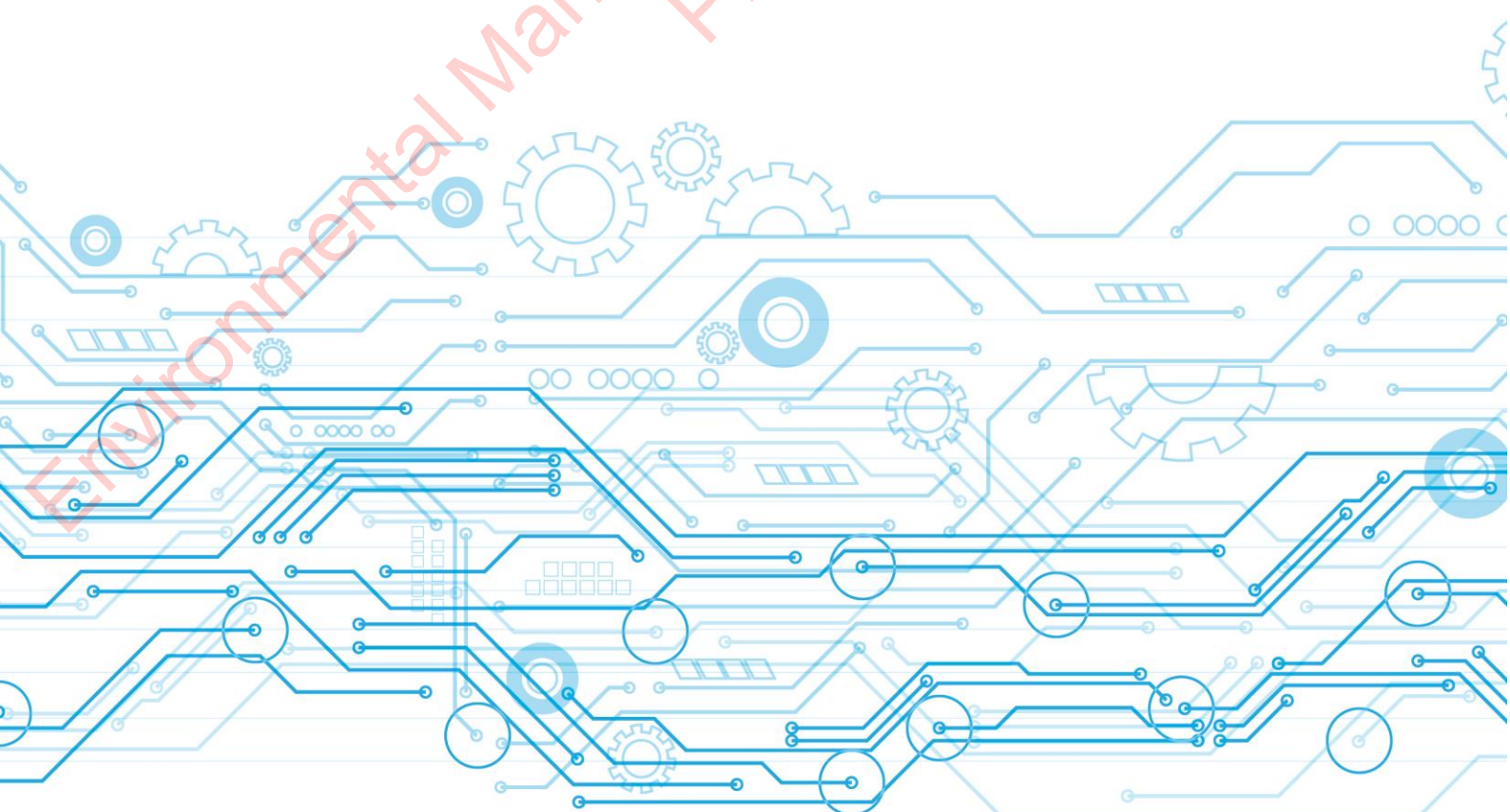


Environmental Management in Rail Construction

Code of Practice



This Rail Industry Safety and Standards Board (RISSB) product has been developed using input from rail experts from across the Rail Industry. RISSB wishes to acknowledge the positive contribution of all subject matter experts and DG representatives who participated in the development of this product.

The RISSB Development Group for this Code of Practice consisted of representatives from the following organisations:

TfNSW	Aurizon	VicTrack
V/Line	PTA WA	ARC Infrastructure
Downer Group	Queensland Rail	Metro Trains Melbourne
Laing O'Rourke	Genesee & Wyoming Inc	ARTC

Development of this Code of Practice was undertaken in accordance with RISSB's accredited processes. It was approved by the Development Group, endorsed by the Standing Committee, and approved for publication by the RISSB Board.

I commend this Code of Practice to the Australasian rail industry as part of the suite of RISSB products assisting the rail industry to manage rail safety, improve efficiency and achieve safety outcomes through interoperability and harmonisation.



Paul Daly
Chief Executive Officer
Rail Industry Safety and Standards Board

Notice to Users

This RISSB product has been developed using input from rail experts from across the Rail Industry and represents good practice for the industry. The reliance upon or manner of use of this RISSB product is the sole responsibility of the user who is to assess whether it meets their organisation's operational environment and risk profile.

Keeping Codes of Practice up-to-date

To maintain their currency, CoP developed by RISSB are periodically reviewed, and new editions published when required. Between editions, amendments can be issued.

It is important that readers assure themselves of that they are using a current RISSB CoP. Information about RISSB CoP, including amendments, can be found by visiting www.rissb.com.au.

RISSB welcomes suggestions for improvements and asks readers to notify us immediately of any apparent inaccuracies or ambiguities, please contact us via email at info@rissb.com.au or write to Rail Industry Safety and Standards Board, PO Box 518, Spring Hill, QLD 4004, Australia.

RISSB product can be found at: <http://www.rissb.com.au/products/>.

Document Control

Identification

Document Title	Version	Date
Environmental Management in Rail Construction	1.0	26 March 2019

Approval

Name	Date
Rail Industry Safety and Standards Board	26 March 2019

Copyright

© RISSB

All rights are reserved. No part of this work is to be reproduced or copied in any form or by any means, electronic or mechanical, including photocopying, without the written permission of RISSB, unless otherwise permitted under the Copyright Act 1968.

Contents

1	Background.....	5
1.1	Purpose and Scope.....	5
1.2	Typical Construction Activities.....	5
1.3	Terms and Definitions.....	6
1.4	References.....	6
2	Environmental Management Framework.....	8
2.1	Environmental Management System.....	8
2.2	Environmental Impact Assessment.....	8
2.3	Environmental Risk and Opportunities Assessment.....	9
2.4	Design.....	9
2.5	Procurement.....	10
2.6	Stakeholders and Impacts.....	10
2.7	Environmental Plans and Controls.....	11
2.8	Inspection, Monitoring and Corrective Action.....	11
2.9	Handover.....	11
2.10	Environmental Management Process.....	11
3	Construction Environmental Management.....	12
3.1	Identification of Environmental Issues.....	12
3.2	Air quality.....	13
3.3	Erosion and Sedimentation.....	14
3.4	Acid Sulfate Soils.....	15
3.5	Surface Water Management.....	16
3.6	Groundwater Management.....	17
3.7	Salinity.....	18
3.8	Water Sensitive Design.....	19
3.9	Contamination and Hazardous Materials.....	20
3.10	Ecology.....	22
3.11	Bio-Security.....	24
3.12	Noise and Vibration.....	25
3.13	Aboriginal Heritage.....	26
3.14	Built Heritage.....	27
3.15	Landscaping, urban design and visual.....	28
3.16	Waste Management.....	30
3.17	Spoil.....	31
3.18	Fire.....	32