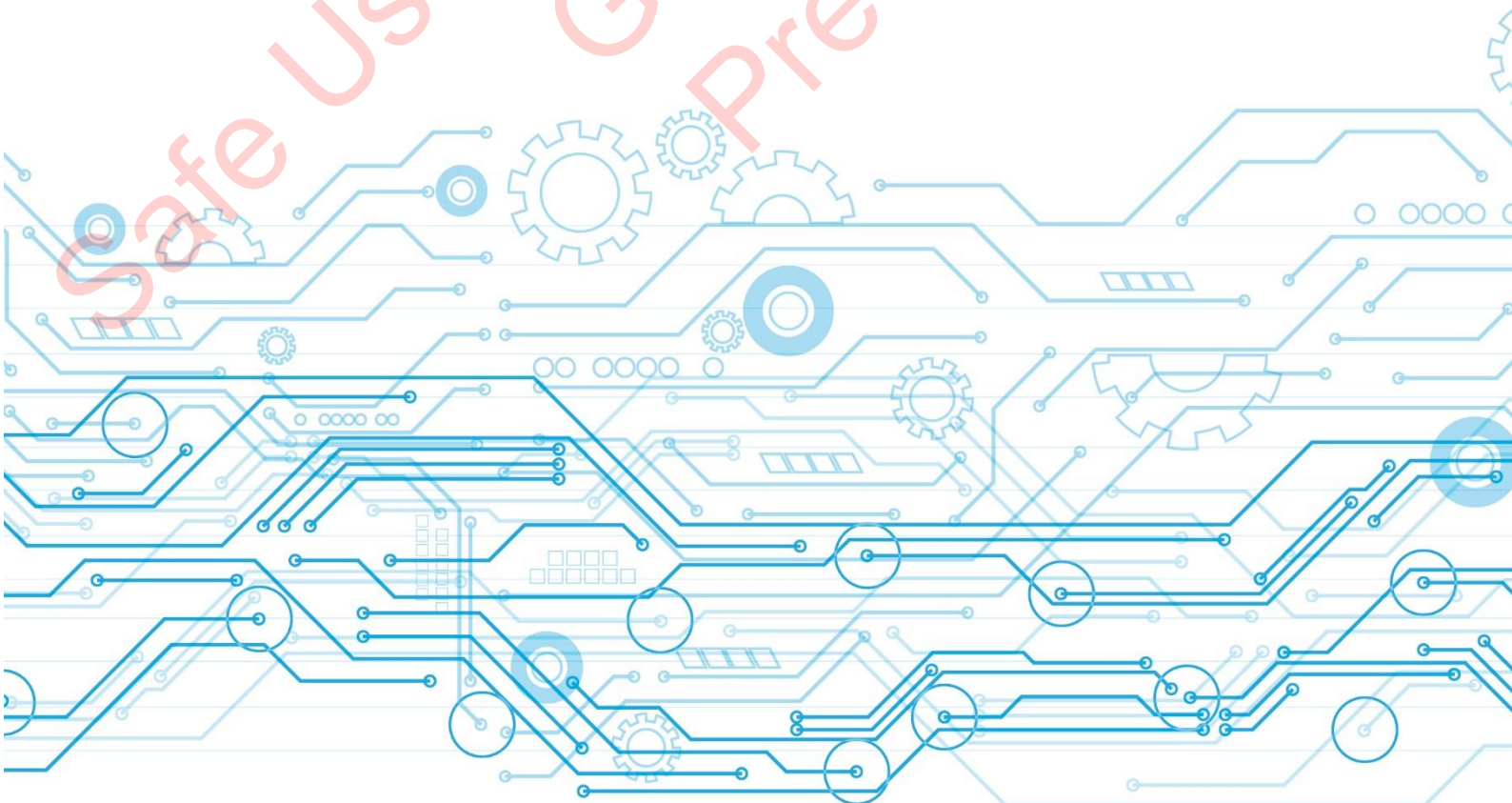


# The Safe Use of Mobile Electronic Devices on the Railway Network Guideline



This Rail Industry Safety and Standards Board (RISSB) product has been developed using input from rail experts from across the Rail Industry. RISSB wishes to acknowledge the positive contribution of all subject matter experts and DG representatives who participated in the development of this product.

The RISSB Development Group for this Guideline consisted of representatives from the following organisations:

Metro Trains	Transport for NSW	Queensland Rail
Rail Safety Consulting Australia	KOUPA Tech	Metro Trains Sydney
Public Transport Authority of WA	Laing O'Rourke Australia	Sydney Trains
Victorian State Government- Department of Transport		

Development of this Guideline was undertaken in accordance with RISSB's accredited processes. It was approved by the Development Group, endorsed by the Standing Committee, and approved for publication by the RISSB Board.

I commend this Guideline to the Australasian rail industry as part of the suite of RISSB products assisting the rail industry to manage rail safety, improve efficiency and achieve safety outcomes through interoperability and harmonisation.



**Deb Spring**  
Exec Chair / CEO  
Rail Industry Safety and Standards Board

---

## Notice to Users

The reliance upon or manner of use of this RISSB product is the sole responsibility of the user who is to assess whether it meets their organisation's operational environment and risk profile.

## Keeping Guidelines up-to-date

To maintain their currency, Guidelines developed by RISSB are periodically reviewed, and new editions published when required. Between editions, amendments can be issued.

It is important that readers assure themselves of that they are using a current RISSB Guideline. Information about RISSB Guidelines, including amendments, can be found by visiting [www.rissb.com.au](http://www.rissb.com.au).

RISSB welcomes suggestions for improvements and asks readers to notify us immediately of any apparent inaccuracies or ambiguities, please contact us via email at [info@rissb.com.au](mailto:info@rissb.com.au) or write to Rail Industry Safety and Standards Board, PO Box 518, Spring Hill, QLD 4004, Australia.

RISSB product can be found at: <http://www.rissb.com.au/products/>.

## Document Control

### Identification

Document Title	Version	Date
The Safe Use of Mobile Electronic Devices on the Railway Network	1.0	2 <sup>nd</sup> December 2019

### Document History

Publication Version	Effective date	Page(s) Affected	Reason for and extent of changes
1.0		All	First Release

### Approval

Name	Date
Rail Industry Safety and Standards Board	2 <sup>nd</sup> December 2019

## Copyright

© RISSB

All rights are reserved. No part of this work is to be reproduced or copied in any form or by any means, electronic or mechanical, including photocopying, without the written permission of RISSB, unless otherwise permitted under the Copyright Act 1968.

## Table of Contents

---

<b>1</b>	<b>Introduction .....</b>	<b>5</b>
1.1	Scope .....	5
1.2	Objective .....	5
1.3	Informative references .....	5
1.4	Terms and definitions .....	6
1.5	Abbreviations .....	6
<b>2</b>	<b>General.....</b>	<b>7</b>
2.1	Definition of mobile electronic devices .....	7
2.2	Uses, distractions and risks .....	7
<b>3</b>	<b>Recommended steps for the safe use of mobile electronic devices .....</b>	<b>8</b>
3.1	Effective safety risk management.....	8
3.2	Establish the context.....	8
3.3	Develop scenarios to identify and analyse issues.....	9
3.4	Assess the risk .....	9
3.5	Undertake research.....	9
3.6	Adopt appropriate solutions.....	9
3.7	Monitor and report .....	10

## List of Appendices

---

Appendix A	Example scenarios .....	11
Appendix B	Hazard references.....	14