



# Torrens Connect | RISSB Presentation



# Who is Torrens Connect?

---



Torrens Connect is a joint venture with Transit Systems, John Holland Group and UGL.

Torrens Connect won the franchise to operate Adelaide's trams and buses to deliver a simpler, faster and more connected journeys for people living, working and visiting Adelaide.

Operations successfully commenced July 5<sup>th</sup>, 2020.



***“Connecting communities through Journeys that matter.”***

# Car v's Tram & The Impact on the City

A tale of driver error and the impacts on Light Rail networks



# Introduction

---



**Trams are defined as Light Rail Vehicles**, which operate on tracks positioned in the center lane of a road and share the road with the general public. When you consider that mix, trams impose crash risk on other road users in terms of frequency and severity. Therefore our drivers are responsible for controlling one of the heaviest vehicles on the road.

## Road/Track Conditions

Trams share the road with general road traffic which in Australia is referred to as a Shared Corridor. This is the least desirable tram operational type due to the impact of road traffic on tram travel and reliability.

The second type of track condition is referred to as Closed corridor – which is the preferred option, however due to the large scale of real estate land required – it is not always possible for major cities to accommodate.

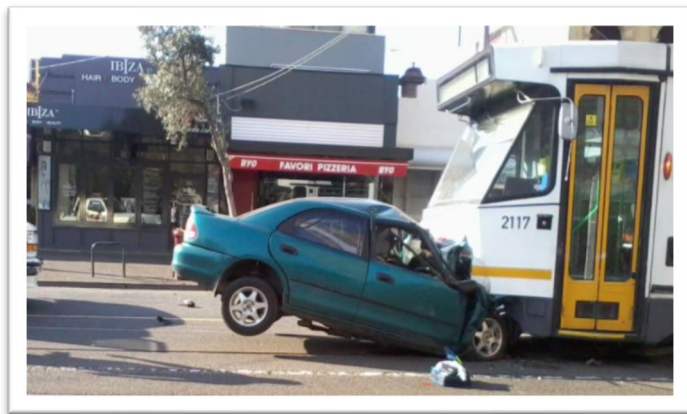
In Adelaide, which is one of the oldest remaining light rail networks, we have 50/50% of shared and closed corridors.



# Current Light Rail Conditions



- In **Adelaide** we've seen an increase in vehicle v's tram collisions as a result of unlearnt behaviours – for example, as a result of Covid, our cities went into lock down which resulted in people working from home. This continued for a number of months and as a result, we unlearnt simple driving behaviours – we simply weren't used to traffic or driving in congested areas because we all stayed localised.
- **Melbourne's** CBD is home to five of the ten top hotspots for collisions, with 226 motorist-tram collisions in 2018. These incidents also severely disrupt the tram network and impact traffic flow with an average of 10 trams out of service at any one time because of a collision.
- **Sydney** CBD has recently seen 11 collisions between trams and vehicles and another eight involving pedestrians. There were also 61 near misses with pedestrians, 31 involving cars, and 16 between trams and cyclists.



# What is a Collision?



\*Adelaide

\*Sydney

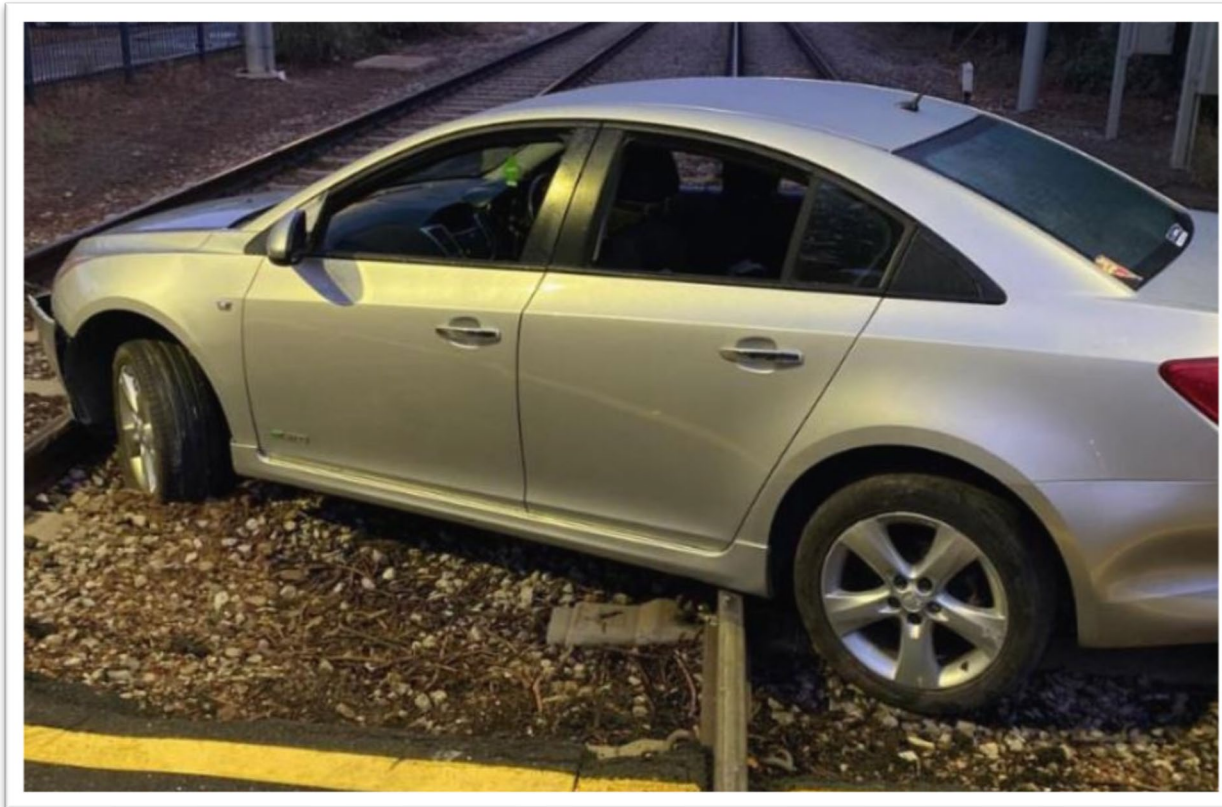
\*Melbourne

# What is a Collision?

---



# Driver loses license after driving onto tram tracks





# Questions?

# Watch out – Trams about



## Curb Modification & Right Turn Ban



## Signage & Light Sequence



## Keeping Concentration



## Closed Corridor



# Impacts to the network and the city



## Operations

- Average of 1 hours network suspension
- Multipole cancelled trips per incident
- Services Cut to enable recovery
- Late Running
- Impact to road users as passenger op for Uber/Taxis

## General Public

- Transport accessibility in general
- Grid lock across the city
- Traffic Control Management
- SAPOL / MFS / Ambulance Intervention

## Passengers

- Potential of Injury
- Complaints
- Ministerial



## Financial & Phycological

- If a collision involves a fatality it is estimated by the
- Regulator to cost the industry \$4.1 million dollars

# ACT Light Rail Near Miss



\*ACT Government [PLAY VIDEO](#)

# Torrens Connect Initiatives



## Road Awareness Campaign with Royal Automobile Association (RAA)

- Social Media Campaign
- TV commercial
- Members Magazine Ad
- Phone App notifications

## Community Engagement Initiatives

- Raising awareness of light rail safety
- Primary and High School Engagement Initiative
- Royal Society for the Blind

## Internal Training

- Our drivers go through mandatory **Defensive Driving**
- We have established a **Emergency Management Committee** where we run through scenario training

